

ART START

—Write these notes in your sketchbook

Balance: Impression of equilibrium in an artwork.

When a composition feels equally weighted.

Symmetrical: an image, that when split in half, is equal or the same on both sides.

Asymmetrical: an image, that when split in half, is not equal or the same on both sides.

Radial: when symmetry is created around a central point.

Symmetrical



Asymmetrical



Radial



ART START

— *Write these notes in your sketchbook*

Emphasis: Used to create a center of interest, the place in an artwork where your eye first lands. (focal point)

Common ways to create a focal point:

- Eyes
- Shapes (especially a circle)
- Directional Lines
- Color/Value

Eyes



Shapes



Directional Lines



Color/Value



ART START

Write these notes in your sketchbook

Contrast: The arrangement of opposite elements in an artwork to create interest.

Example: light vs. dark, rough vs. smooth

Juxtaposition: When two unlike or unrelated things are put together







ART START

Write these notes in your sketchbook

Unity: When components of a work of art are perceived as harmonious or similar, giving the work a sense of uniformity.

(Think of it as the opposite of Variety)





ART START

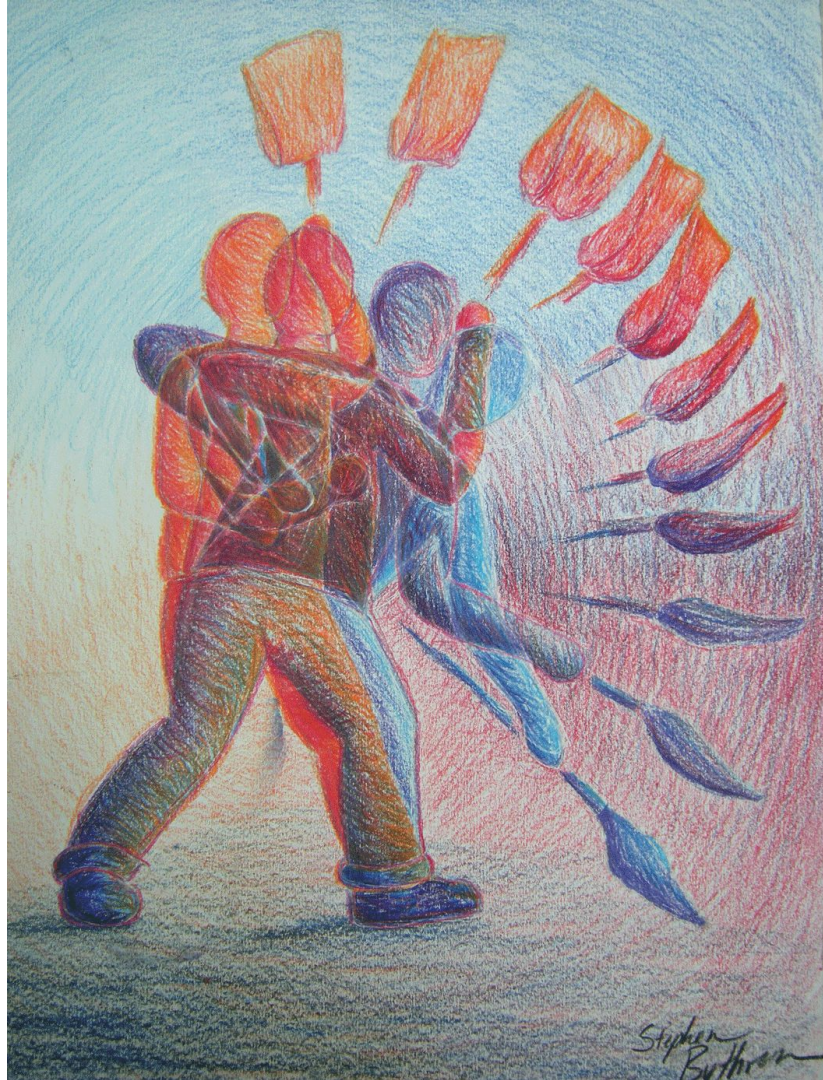
Write these notes in your sketchbook

Movement: Real or implied suggestion of motion through the use of various elements.

Is often used to give life to a piece or as way to lead your eye through a work of art.

Kinetic: a work of art with real movement as its defining feature.

Static: a work of art that lacks movement, action, or change.







ART START

Write these notes in your sketchbook

Rhythm: Repetition of a design element, exact or varied, which can establish a visual beat.

Relies heavily on *pattern*.







ART START

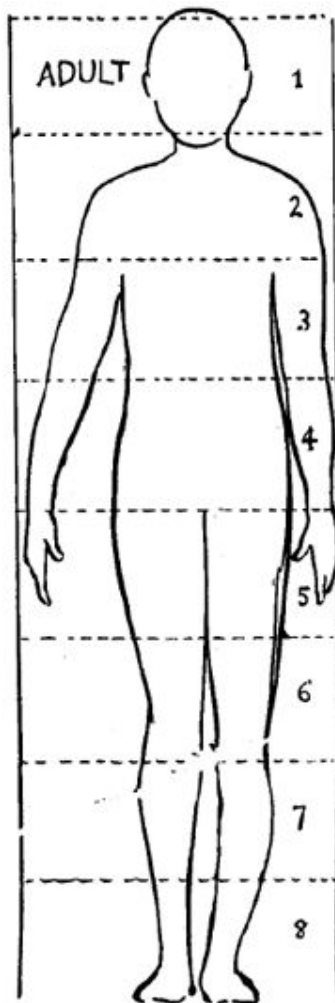
Write these notes in your sketchbook

Proportion/Scale: size relationship of parts to a whole and to one another.

Used to create the illusion of space/depth.



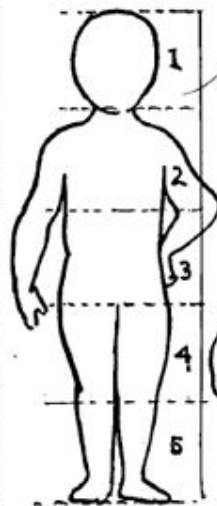




THERE IS NO EXACT STANDARD. THE ADULT FIGURE VARIES FROM FIVE TO EIGHT HEADS TO THE ENTIRE HEIGHT, THE CHILD'S FROM ABOUT FOUR TO FIVE HEADS TO THE BODY.

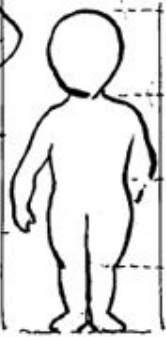


CHILD



CARI-
CA-
TURES

BABY



1
2
3
4
WEE
BABY



ART START

Review:

Which ART PRINCIPLE
does this work of art
best represent?

Why?

Balance
Emphasis
Contrast
Unity
Movement
Rhythm/Pattern
Proportion/Scale

25



Chicago Stock Exchange Trading Room

Adler & Sullivan (original architects)

Vinci & Kenny (reconstruction architects)

1883-1896

American

Created as the center for the Chicago Stock Exchange, this room was the center of action for about 14 years. Then in the 1960's it was scheduled for demolition but was met with a large amount of opposition.

As a result, much of the decorations were preserved and the entire room was reconstructed within the Chicago Art Institute.



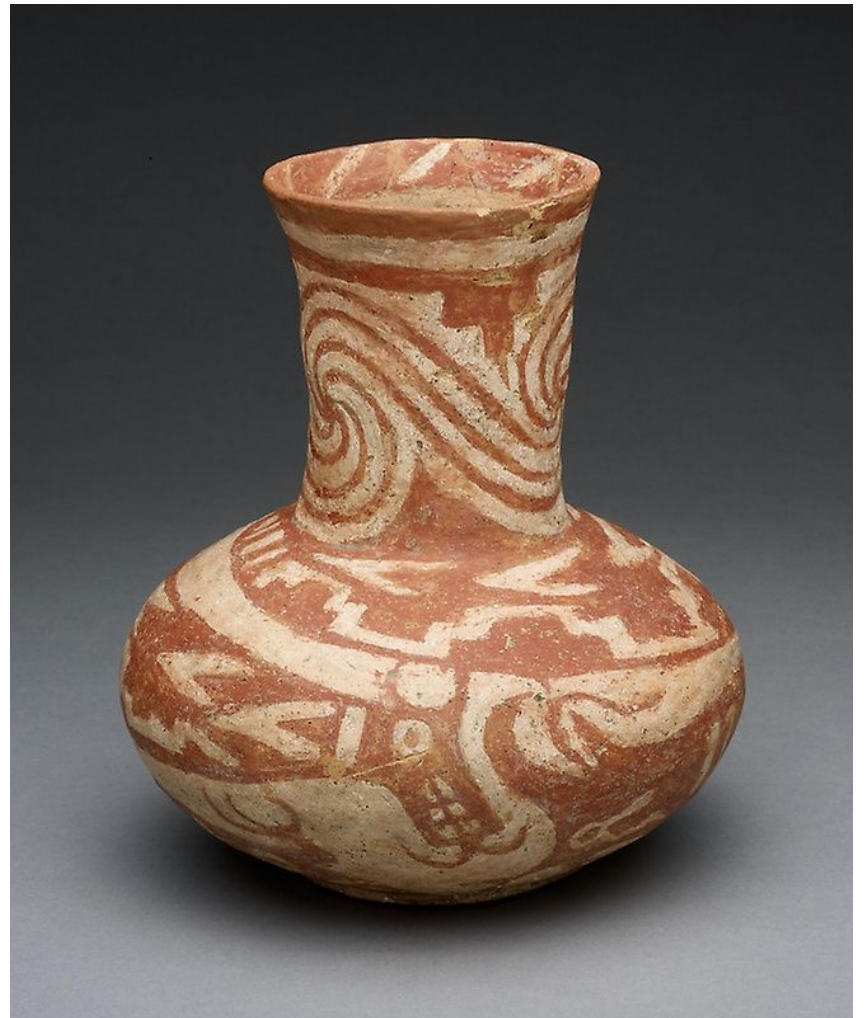
ART START

Review:

Which ART PRINCIPLE does this work of art best represent?
Why?

Balance
Emphasis
Contrast
Unity
Movement
Rhythm/Pattern
Proportion/Scale

26



Bottle with Underwater Serpents

Unknown

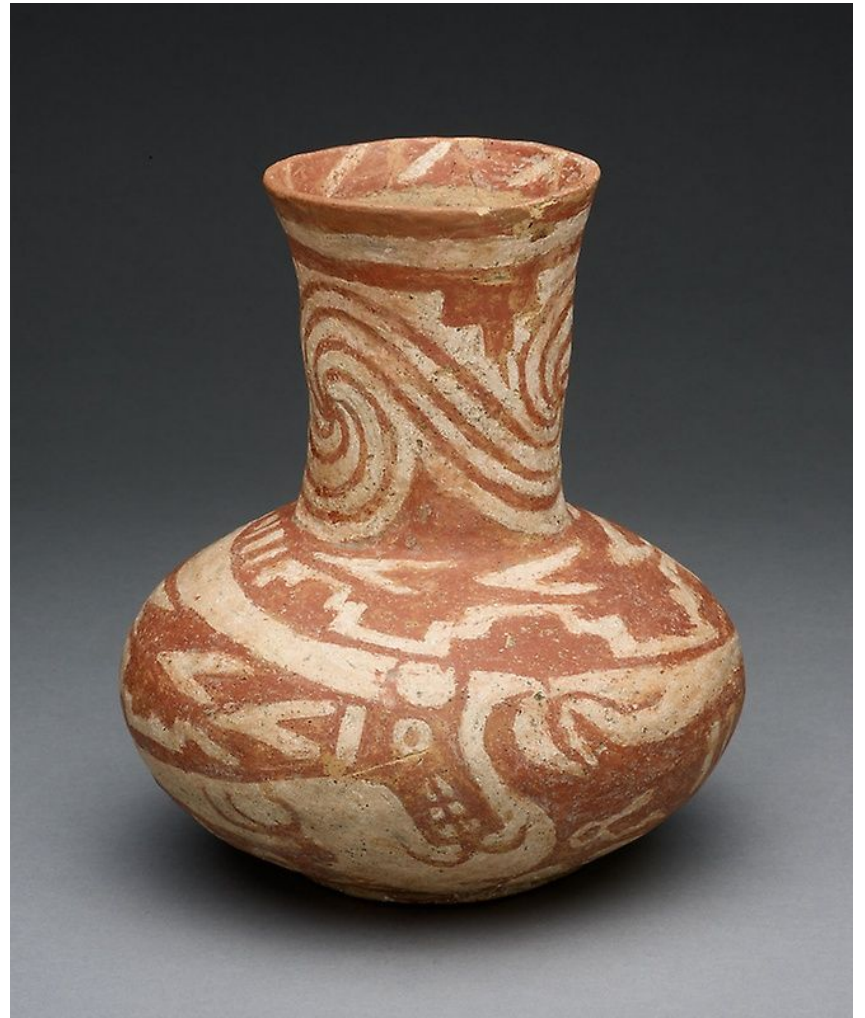
Earthenware and pigment

1300-1500 AD

American, Mississippi or Arkansas

Amerindian: a term used to refer to the indigenous people of America.

Much of the work coming from this period of time are sculptural works such as ceramics, stone, etc, because of their ability to be preserved over long periods of time.



ART START

Review:

Which ART PRINCIPLE does this work of art best represent? Why?

Balance
Emphasis
Contrast
Unity
Movement
Rhythm/Pattern
Proportion/Scale

27



“Untitled”
(Portrait of Ross in L.A.)

Felix Gonzalez-Torres
Individually wrapped candies
1991
American, born Cuba

This work is a “portrait” of Gonzalez’s partner Ross, with the amount of candy being equal to his weight. Viewers are encouraged to help themselves to the candy and the venue would replace the candy each day to keep the weight at approximately 175lbs.

Gonzalez’s work consisted of many “portraits” ranging from family member to political figures and used objects from lightbulbs to clocks to stacks of paper.



ART START

Review:

Which ART PRINCIPLE does this work of art best represent?

Why?

- Balance
- Emphasis
- Contrast
- Unity
- Movement
- Rhythm/Pattern
- Proportion/Scale

28



Gift

Man Ray

Found Object

1921

American

Dadaism: “Anti-Art”, art movement that questioned the original concepts of what fine art is.

Created from artists responding to the outbreak of WW1. As a protest, they purposefully tried to defy logic and instead embraced irrationality.



ART START

Aesthetics Review:

Considering **Personal Aesthetics**, do you think this artwork is good or has value?

Why or why not?



Family Reunion

Nancy Worden

14k gold and sterling silver plating, copper, brass mesh, onyx, acrylic, and resin with cast scorpions and photographs

2012

American

Metalsmithing: referring to the art of making decorative or functional items such as jewelry, silverware, weapons, etc out of various metals.

As an art form, jewelry is able to portray personal narratives or sculptural forms in the way that it is meant to be intimate with the human body. Similar to fashion design.



ART START

Review:

Which ART PRINCIPLE
does this work of art best
represent? Why?

Balance
Emphasis
Contrast
Unity
Movement
Rhythm/Pattern
Proportion/Scale

30



Head of an Apostle

Unknown

Limestone

1210

France, Paris

This piece is believed to have come from a full-length sculpture that stood at one of the entrances to the Notre Dame Cathedral in Paris.

During the French Revolution, many of the sculptures surrounding the cathedral were purposely damaged and removed because of their association to the royal government. This work is one of very few surviving pieces.

